



Ministerie van Volksgezondheid,
Welzijn en Sport

Monitor in- en uitstroom Wlz

Naar leveringsvorm

2020 tm week 25

O.b.v. CBS gegevens 3 juli 2020



Ministerie van Volksgezondheid,
Welzijn en Sport



Inhoud

1. Mutaties vanaf week 12
2. Cliënten met Wlz-zorg
3. VV-verblijf
4. VV-VPT
5. VV-MPT /combi MPT/pgb
6. VV-pgb (sec)
7. GHZ-verblijf
8. GHZ-VPT
9. GHZ-MPT /combi MPT/pgb
10. GHZ-pgb (sec)

1. Mutaties vanaf week 12

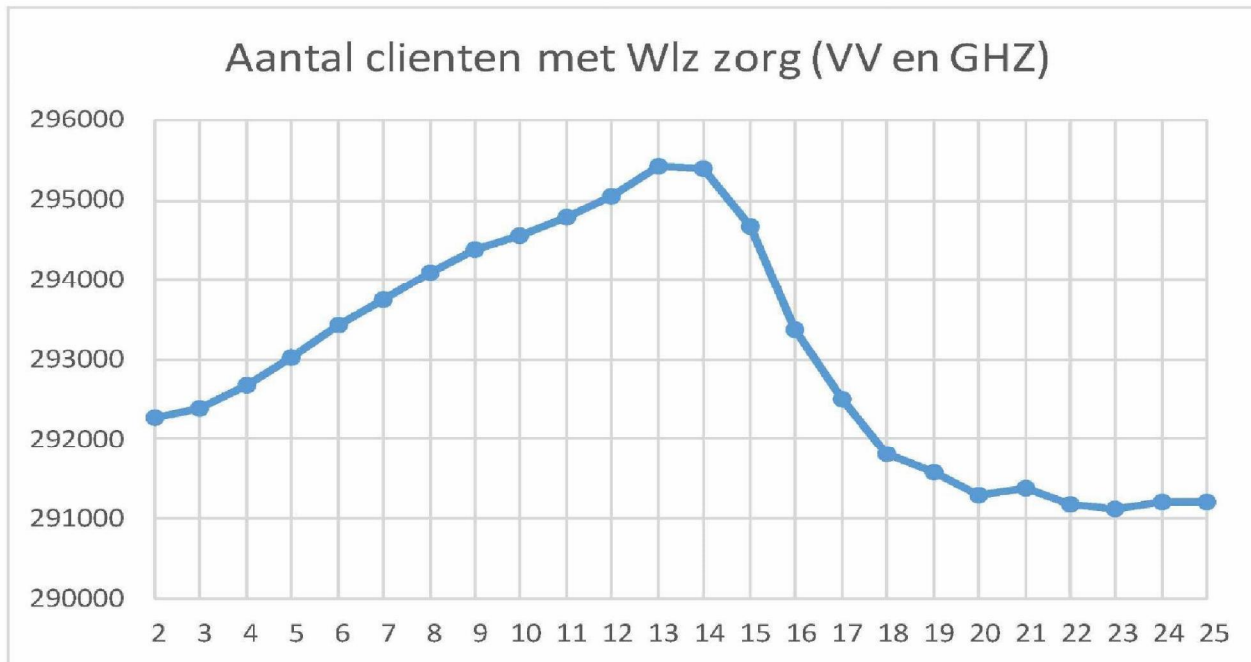


(t.o.v. week 11)

| Week | Verpleging en verzorging | | | | Gehandicaptenzorg | | | | Totaal |
|------------|--------------------------|------|-------------|---------|-------------------|-----|-----|---------|--------|
| | Verblijf | VPT | MPT | pgb sec | Verblijf | VPT | MPT | pgb sec | |
| 12 | 15 | 45 | 140 | 0 | 155 | 45 | 330 | 55 | -2.705 |
| 13 | -50 | 15 | 330 | 25 | 140 | 45 | 355 | 40 | -3.000 |
| 14 | -440 | 15 | 395 | -5 | 90 | 45 | 390 | 30 | -2.890 |
| 15 | -1.015 | -5 | 300 | -30 | 45 | 45 | 410 | 15 | -3.075 |
| 16 | -1.370 | -65 | 180 | -25 | -10 | 5 | 435 | -10 | -3.110 |
| 17 | -940 | -15 | 105 | -20 | -30 | -5 | 455 | -10 | -2.965 |
| 18 | -750 | -20 | 80 | -35 | -35 | 0 | 455 | -30 | -2.965 |
| 19 | -305 | -30 | 50 | -35 | -5 | 20 | 455 | -30 | -2.965 |
| 20 | -265 | 10 | -40 | -20 | 5 | 5 | 460 | -45 | -2.845 |
| 21 | 5 | 5 | 90 | -30 | 15 | 45 | 460 | -45 | -2.845 |
| 22 | -10 | -15 | -150 | -35 | 15 | 5 | 460 | -45 | -2.845 |
| 23 | 10 | -45 | -40 | -40 | 70 | 10 | 460 | -45 | -2.845 |
| 24 | 305 | 0 | -215 | -45 | 100 | 45 | 460 | -45 | -2.845 |
| 25 | 215 | -25 | -130 | -45 | 110 | 5 | 460 | -45 | -2.845 |
| week 12-19 | -4.855 | -60 | 1.580 | -125 | 350 | 20 | 330 | 55 | -2.705 |
| week 12-20 | -5.120 | -50 | 1.540 | -145 | 355 | 25 | 355 | 40 | -3.000 |
| week 12-21 | -5.115 | -45 | 1.630 | -175 | 370 | 25 | 390 | 30 | -2.890 |
| week 12-22 | -5.125 | -60 | 1.480 | -210 | 385 | 30 | 410 | 15 | -3.075 |
| week 12-23 | -5.115 | -105 | 1.440 | -250 | 455 | 40 | 435 | -10 | -3.110 |
| week 12-24 | -4.810 | -105 | 1.225 | -295 | 555 | 40 | 455 | -30 | -2.965 |
| week 12-25 | -4.595 | -130 | 1.095 | -340 | 665 | 45 | 460 | -45 | -2.845 |

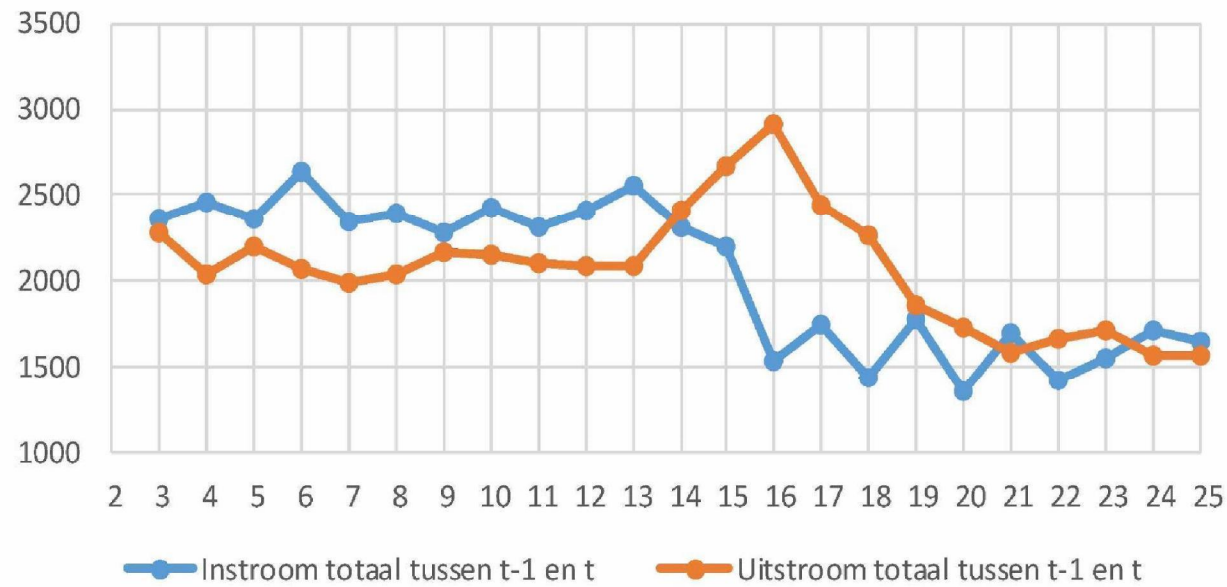


2. Cliënten met Wlz-zorg



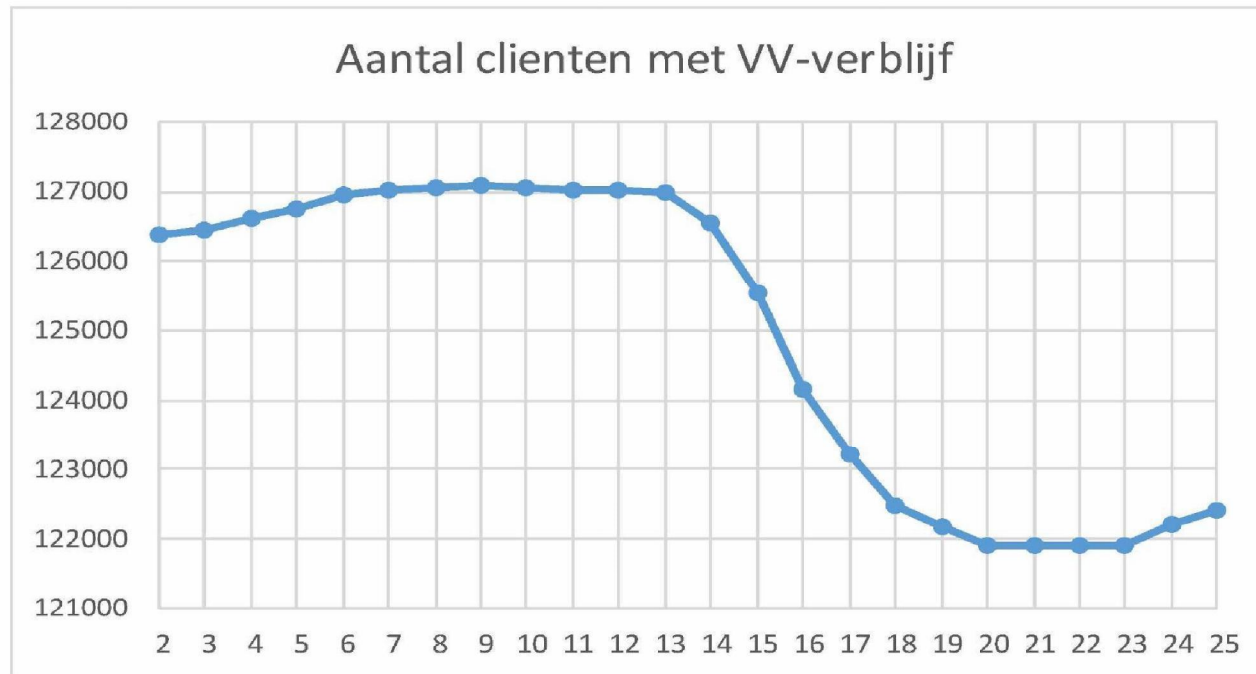


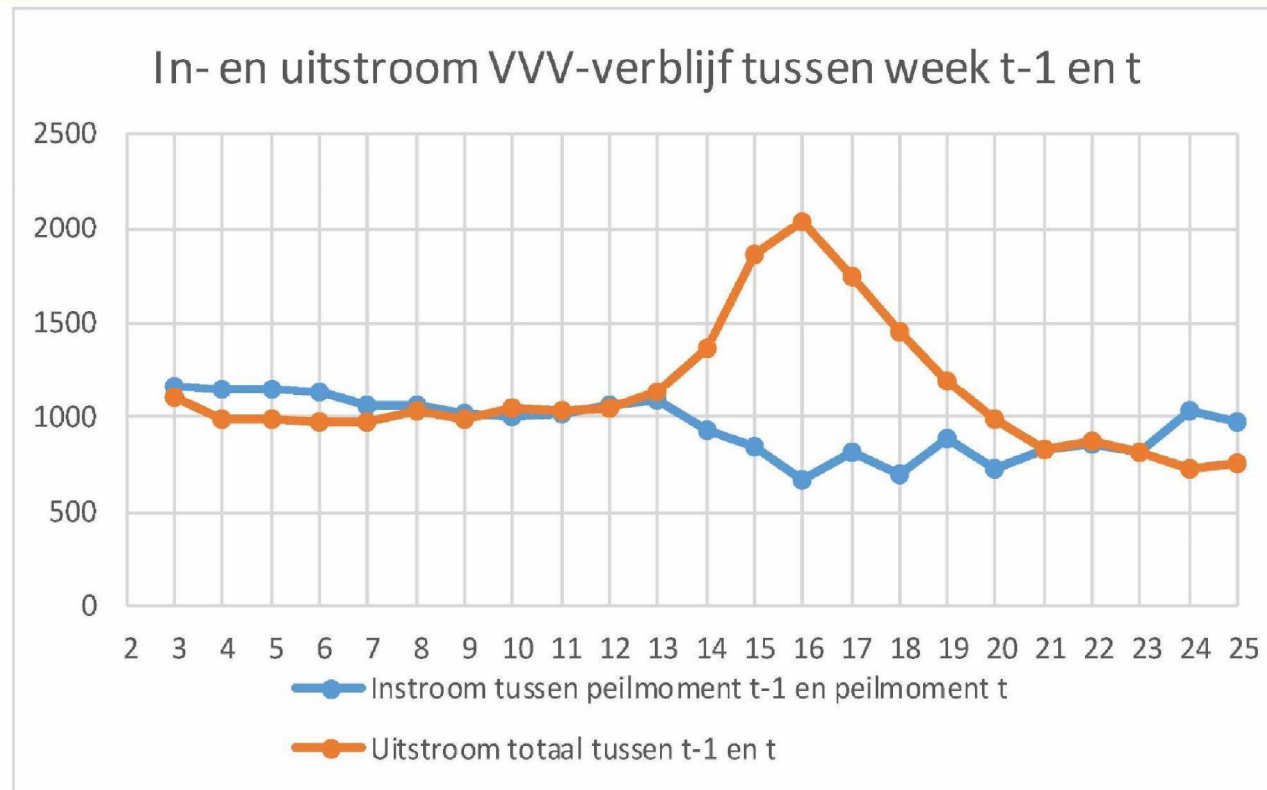
In- en uitstroom cliënten met Wlz-zorg tussen week t-1 en t

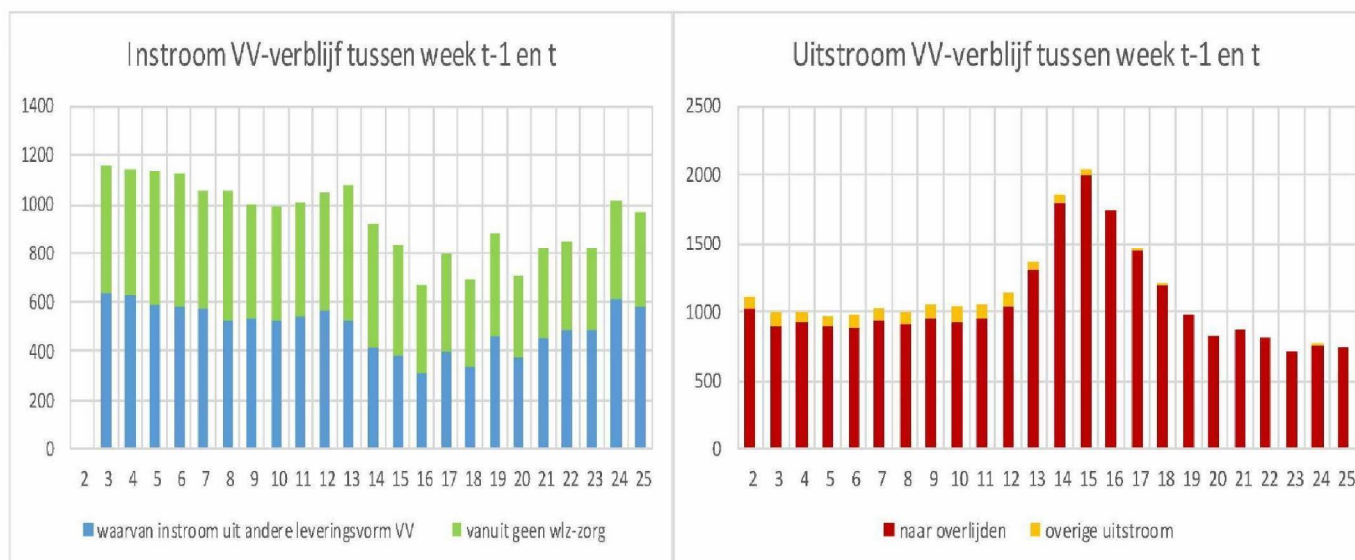




2. VV verblijf

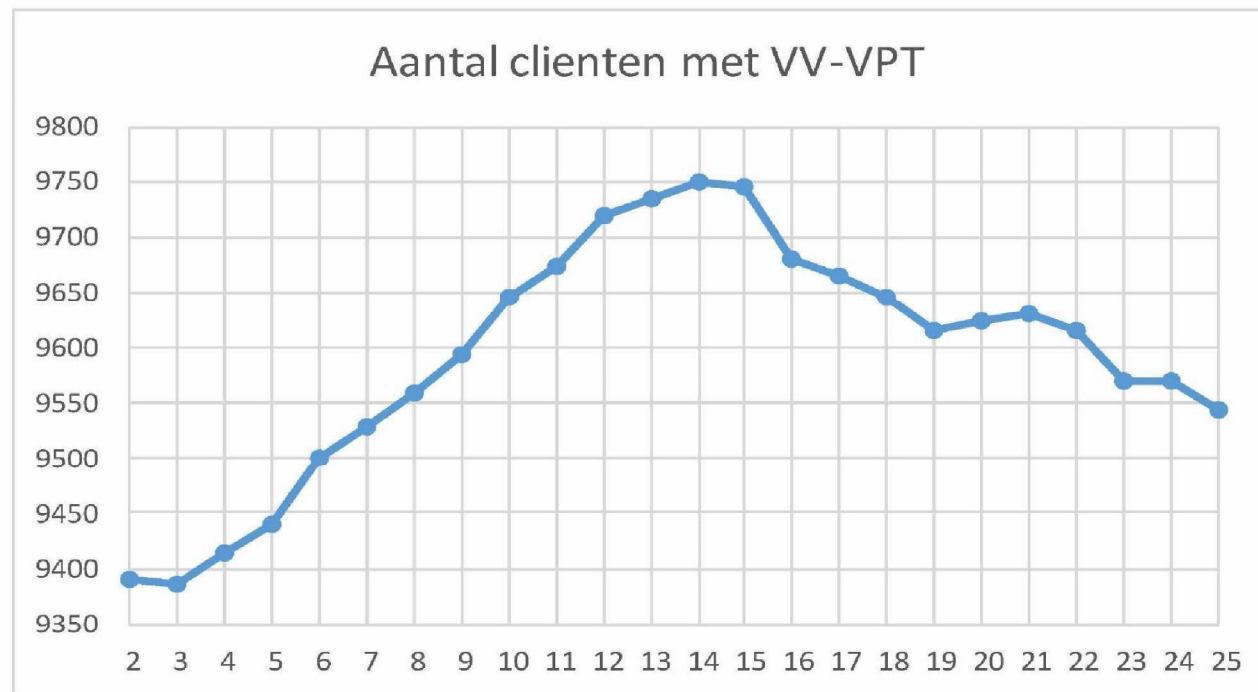




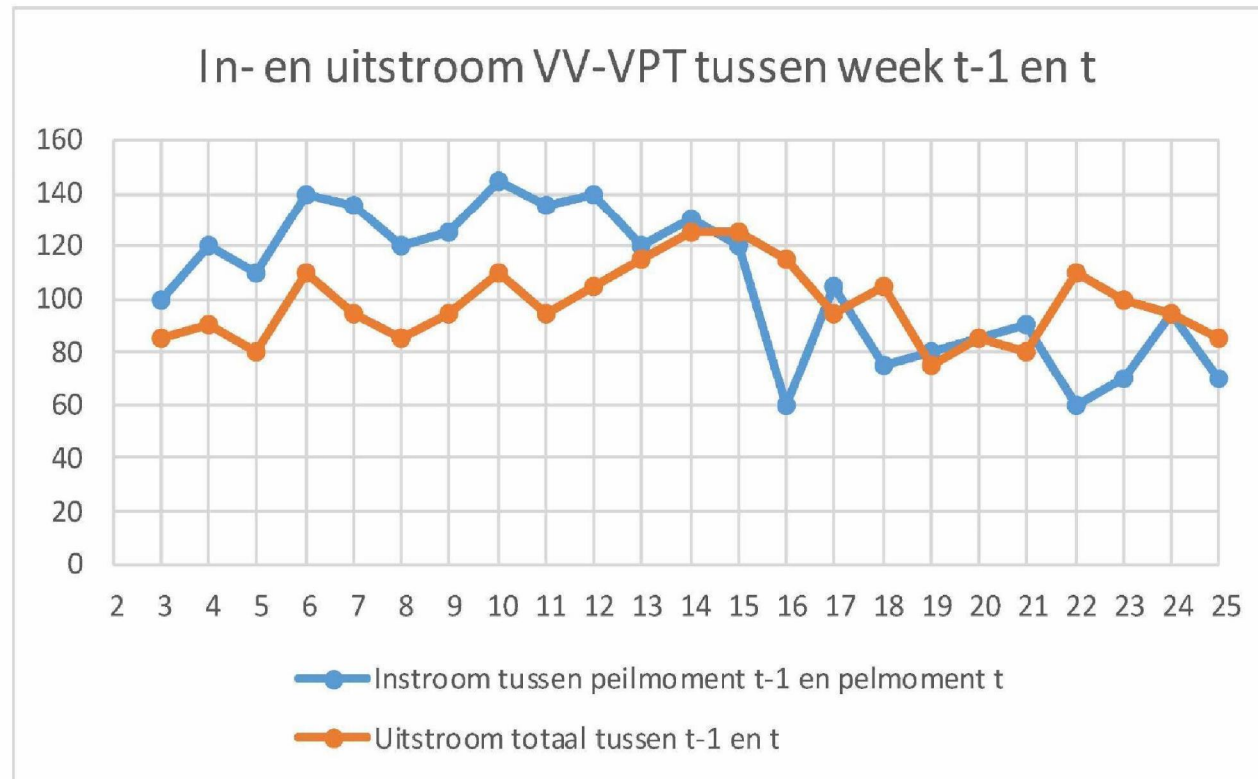




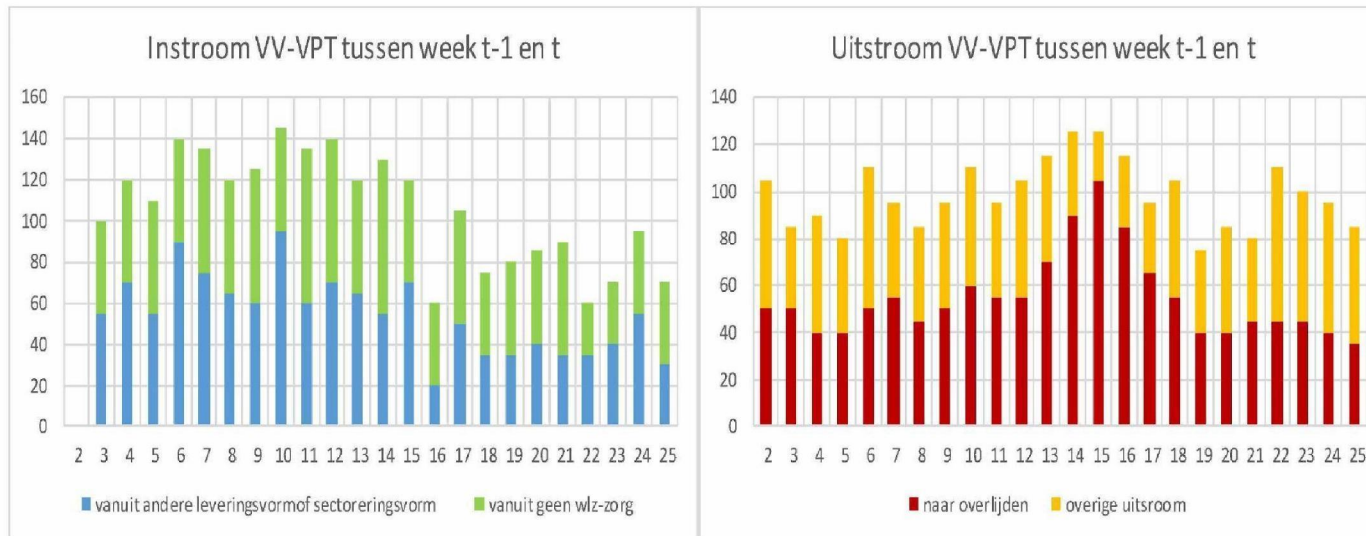
3. VV- Volledig Pakket thuis



VV VPT in- en uitstroom

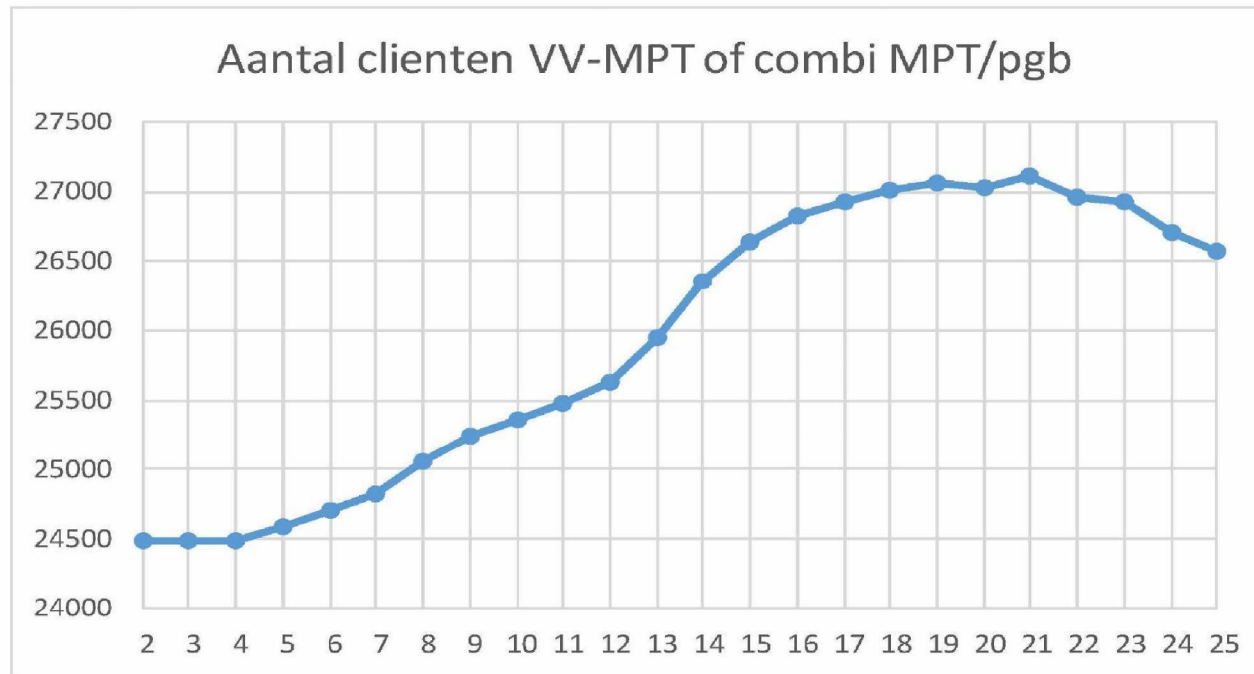


VV VPT in- en uitstroom

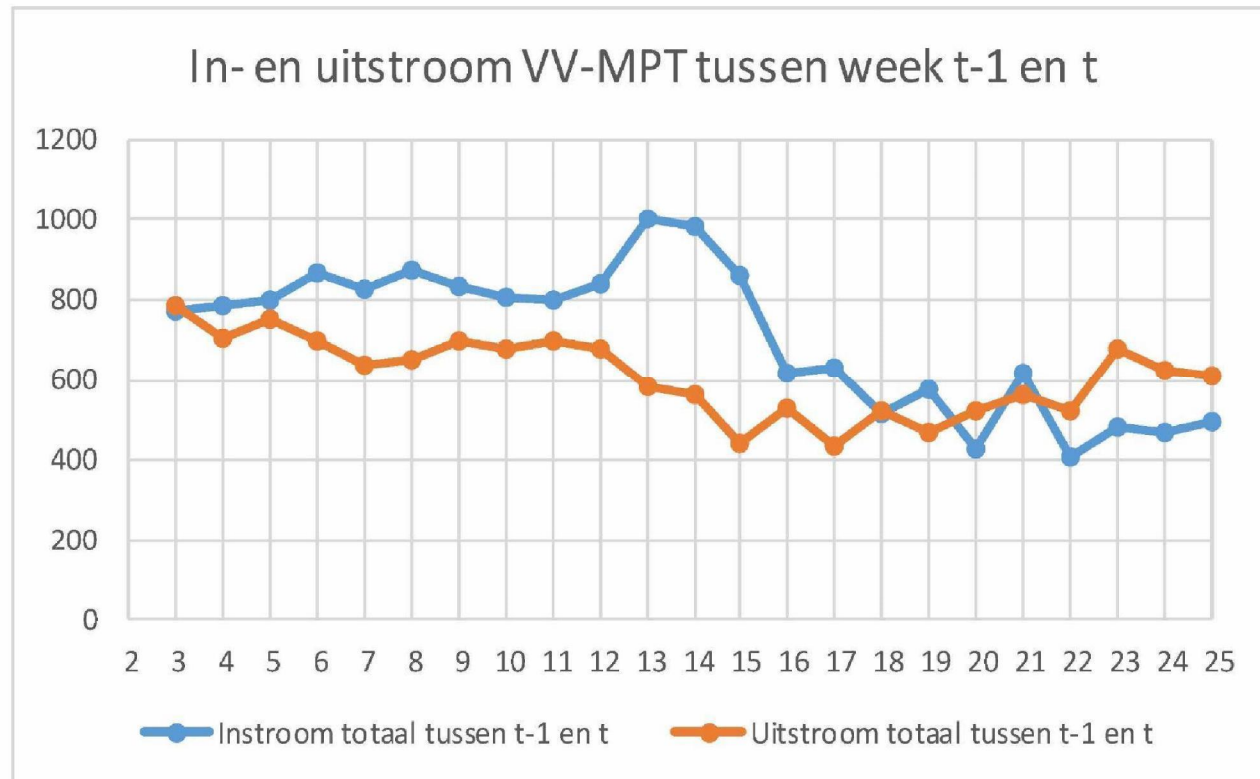




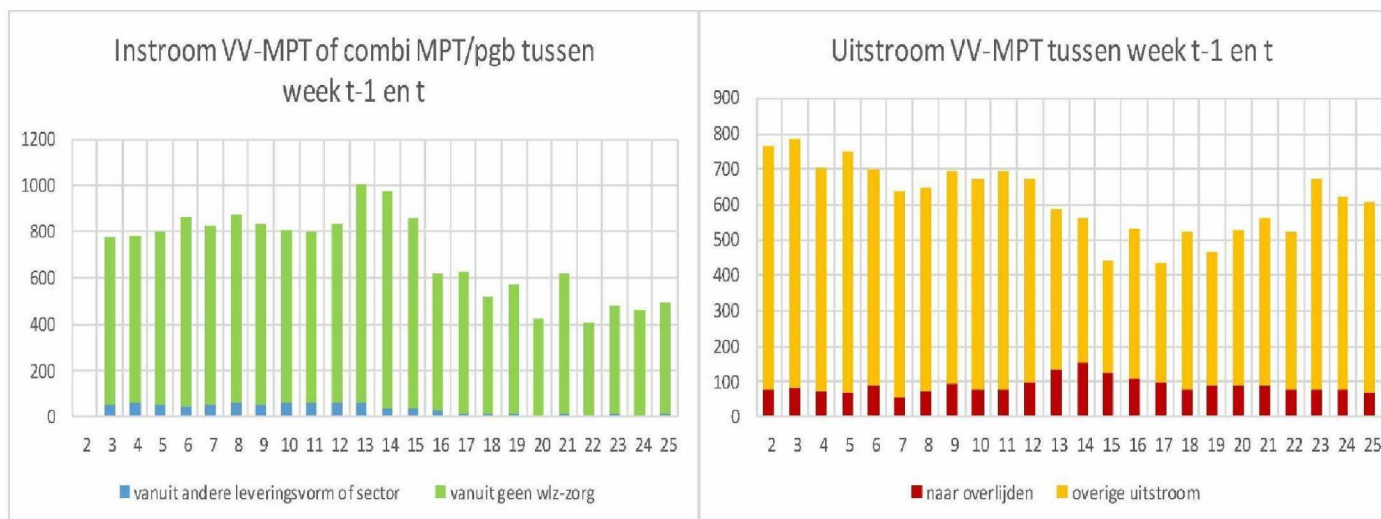
4. VV Modulair Pakket thuis of combi MPT/pgb



VV MPT in- en uitstroom

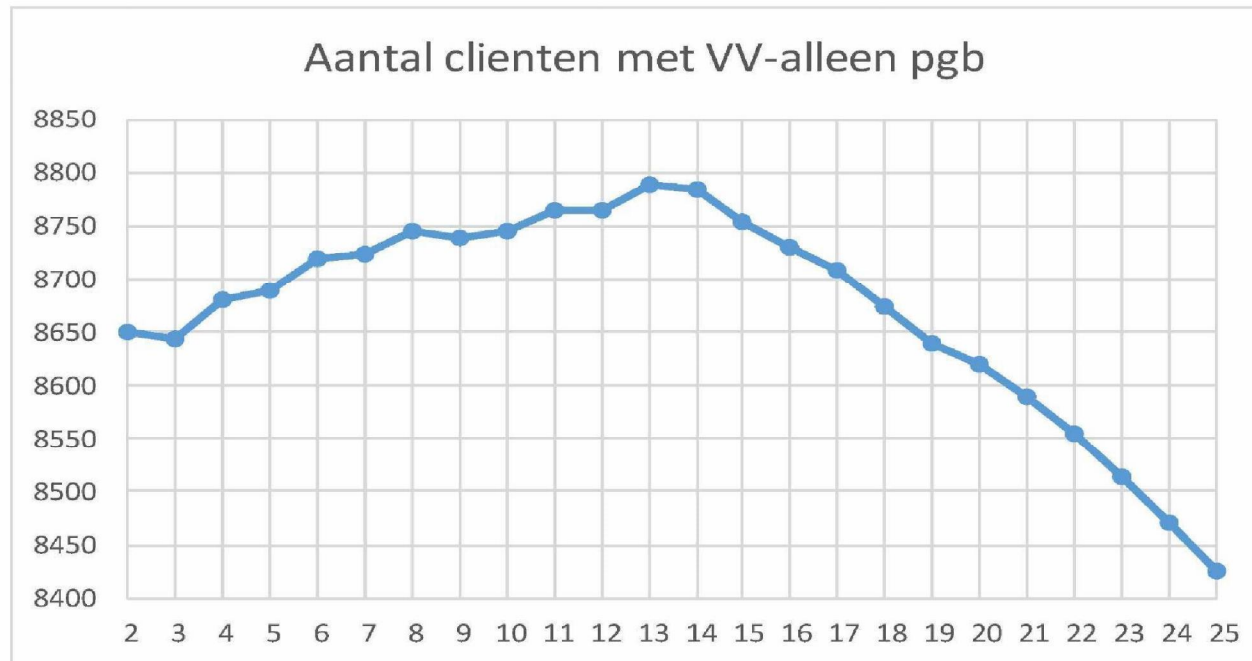


VV MPT in- en uitstroom

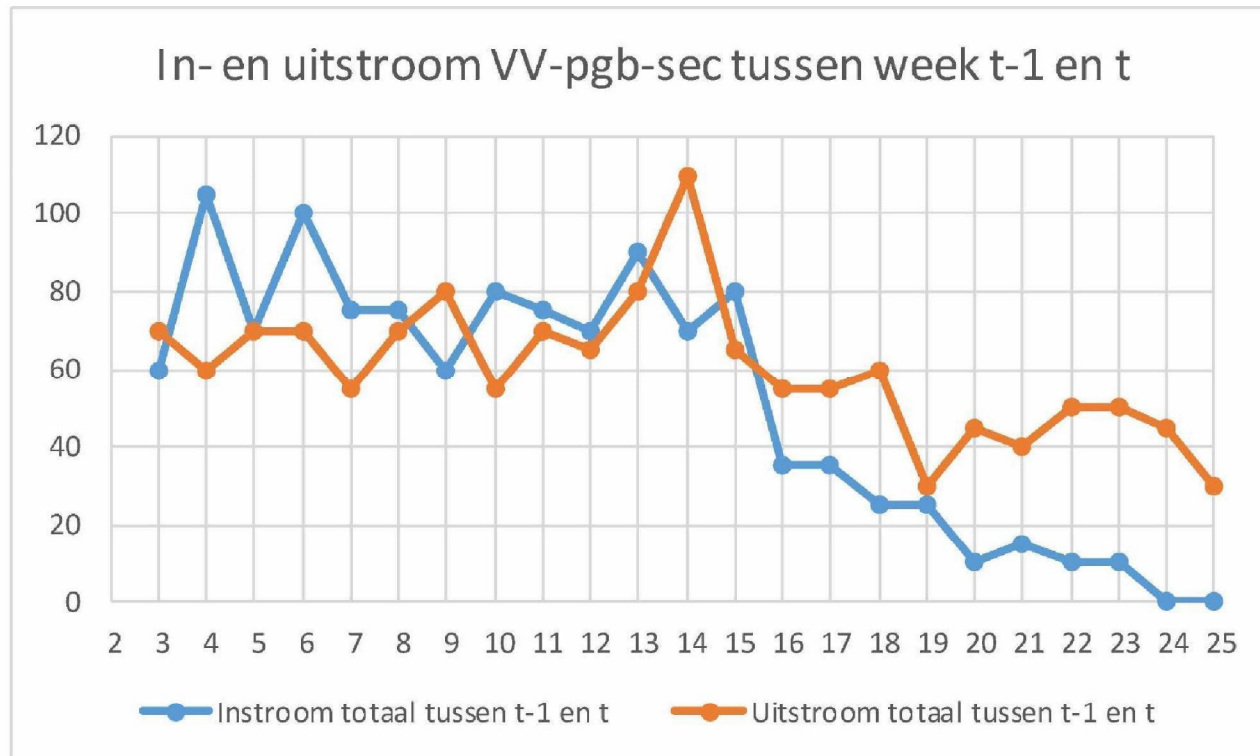




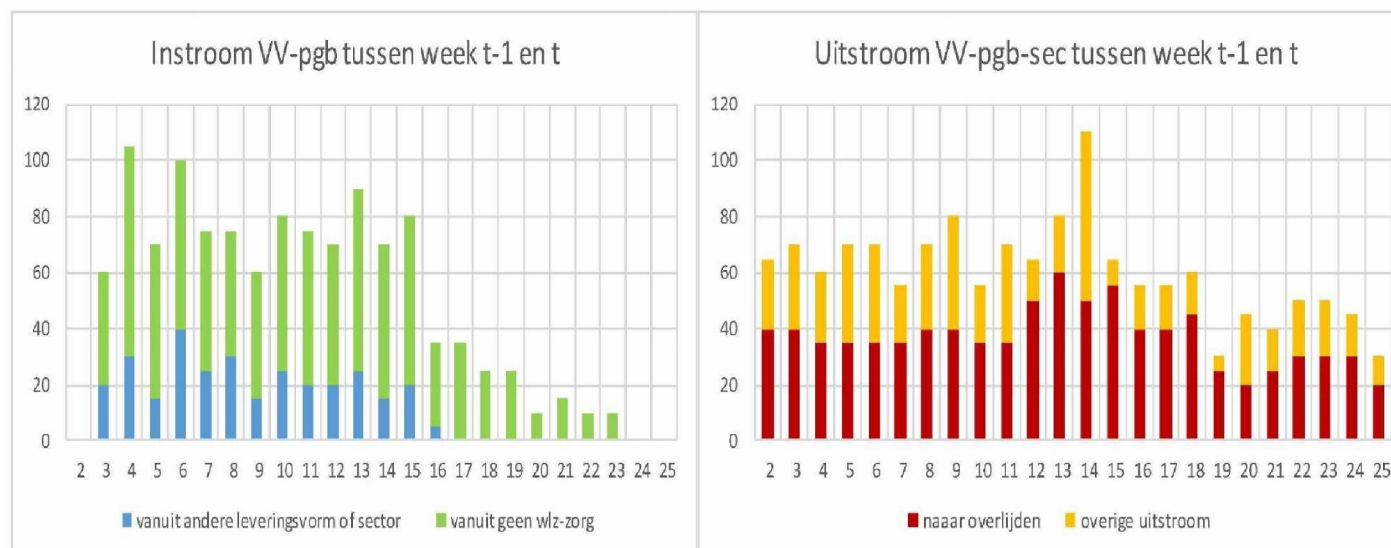
5. VV pgb-sec



VV pgb-sec in- en uitstroom

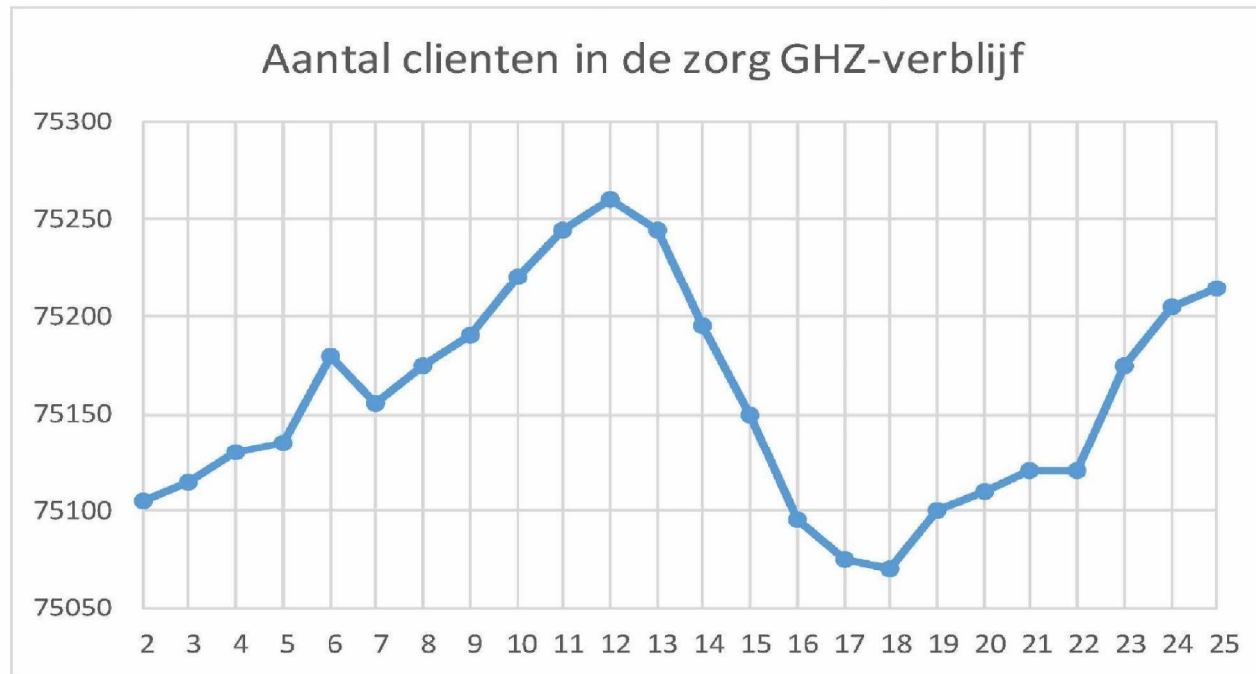


VV pgb-sec in- en uitstroom

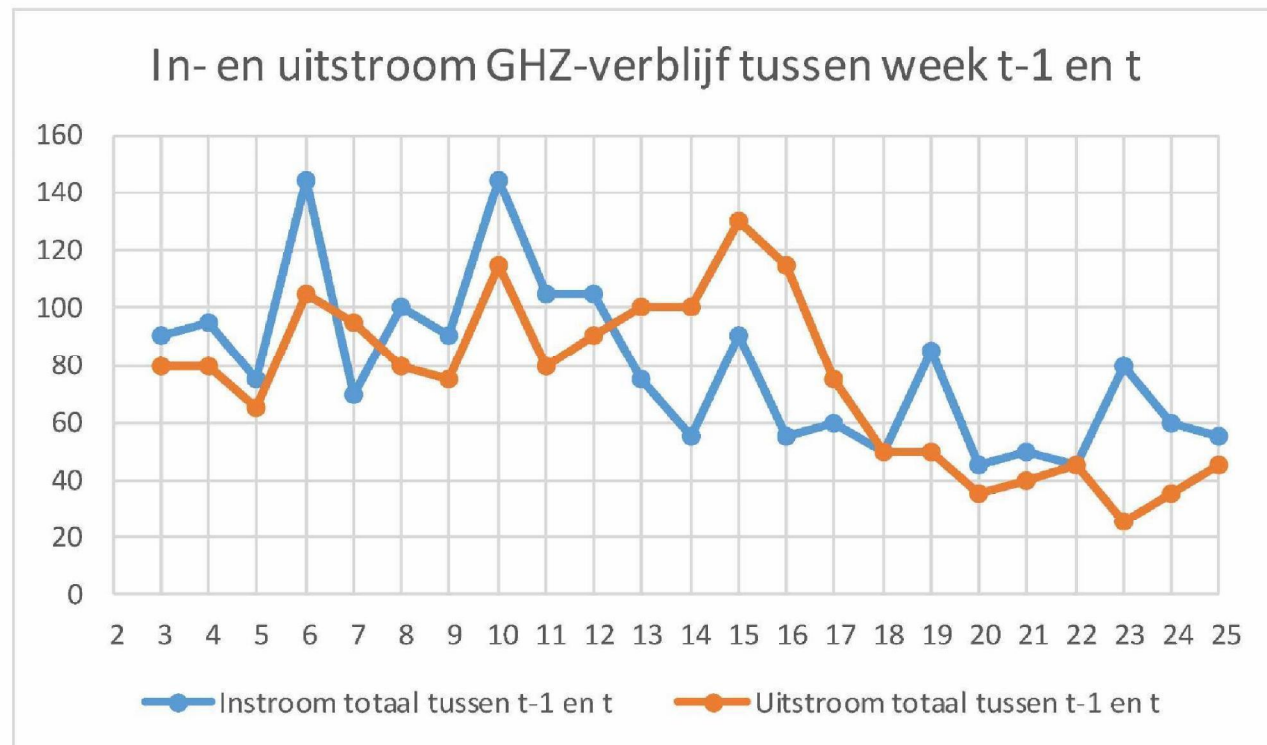




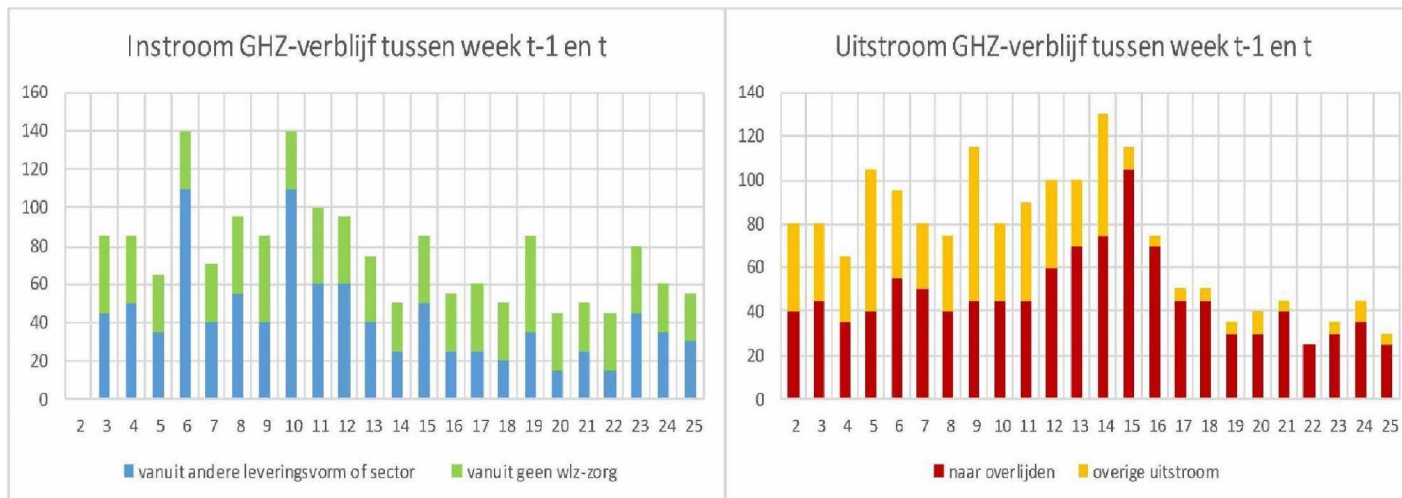
6. Gehandicaptenzorg verblijf



GHZ-verblijf in- en uitstroom

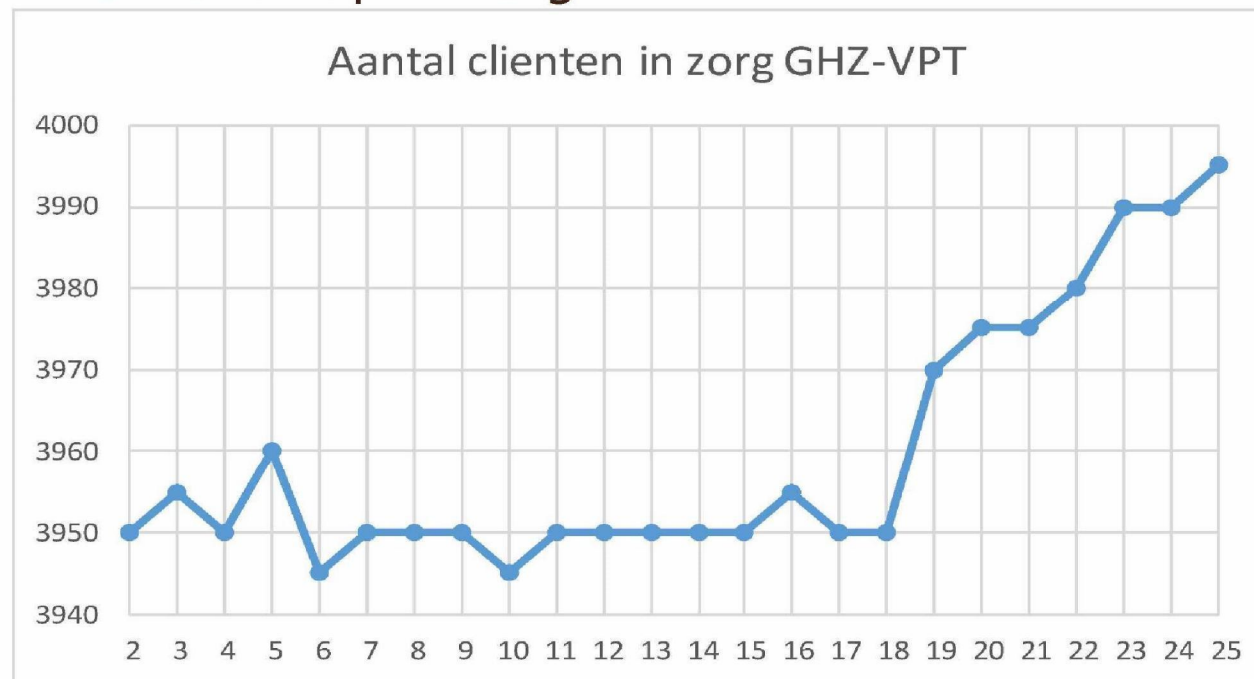


GHZ verblijf in- en uitstroom





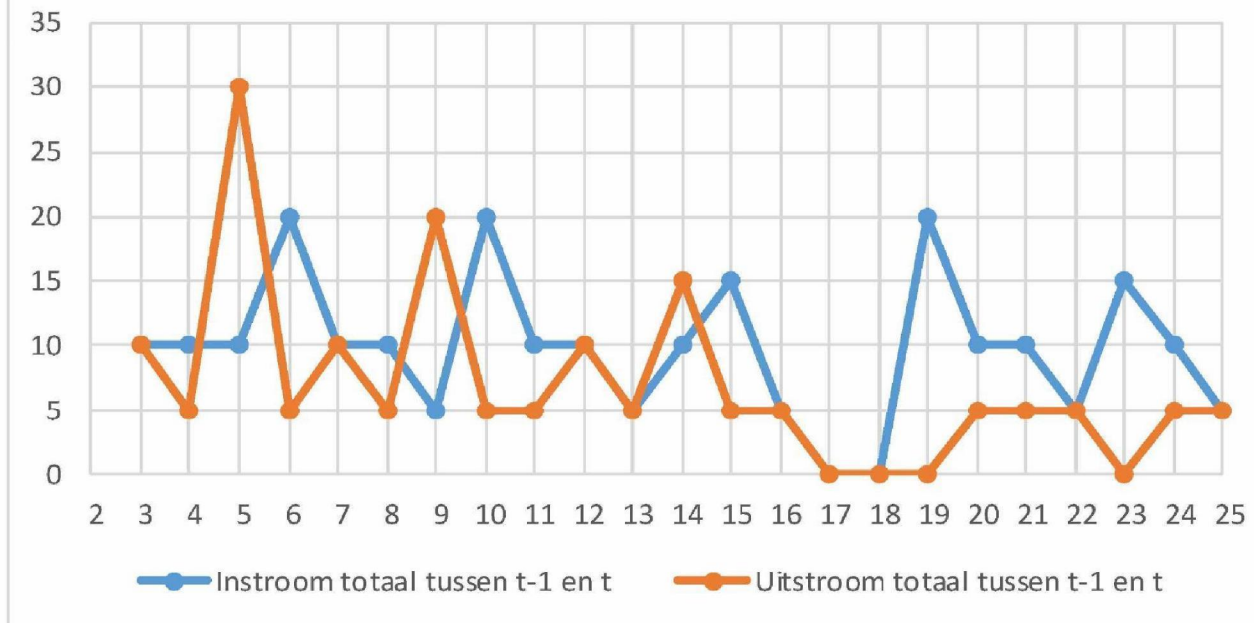
7. Gehandicaptenzorg VPT



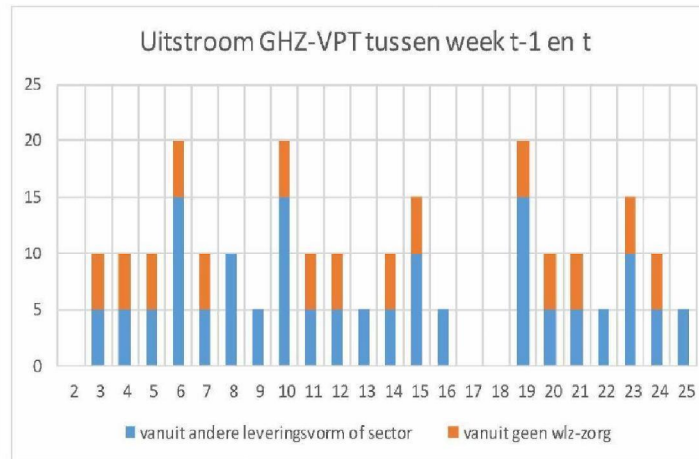
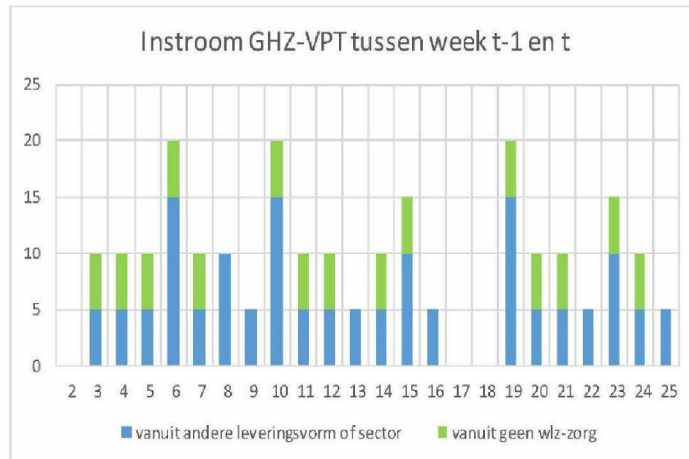
GHZ-VPT in- en uitstroom



In- en uitstroom GHZ-VPT tussen week t-1 en t

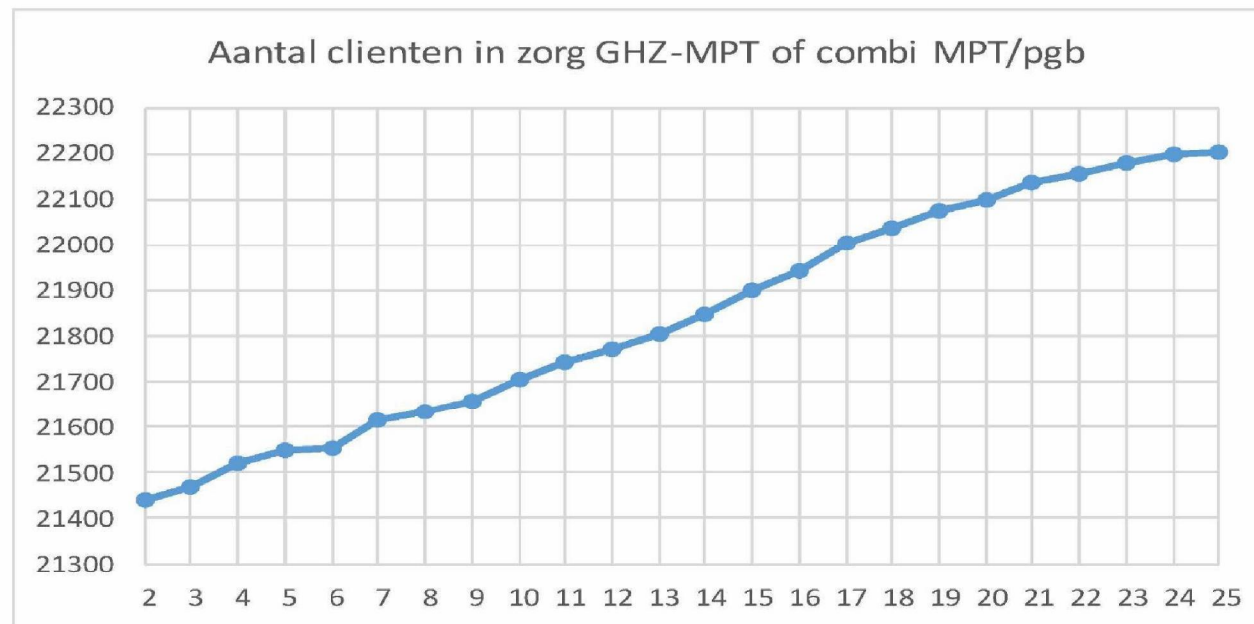


GHZ VPT in- en uitstroom

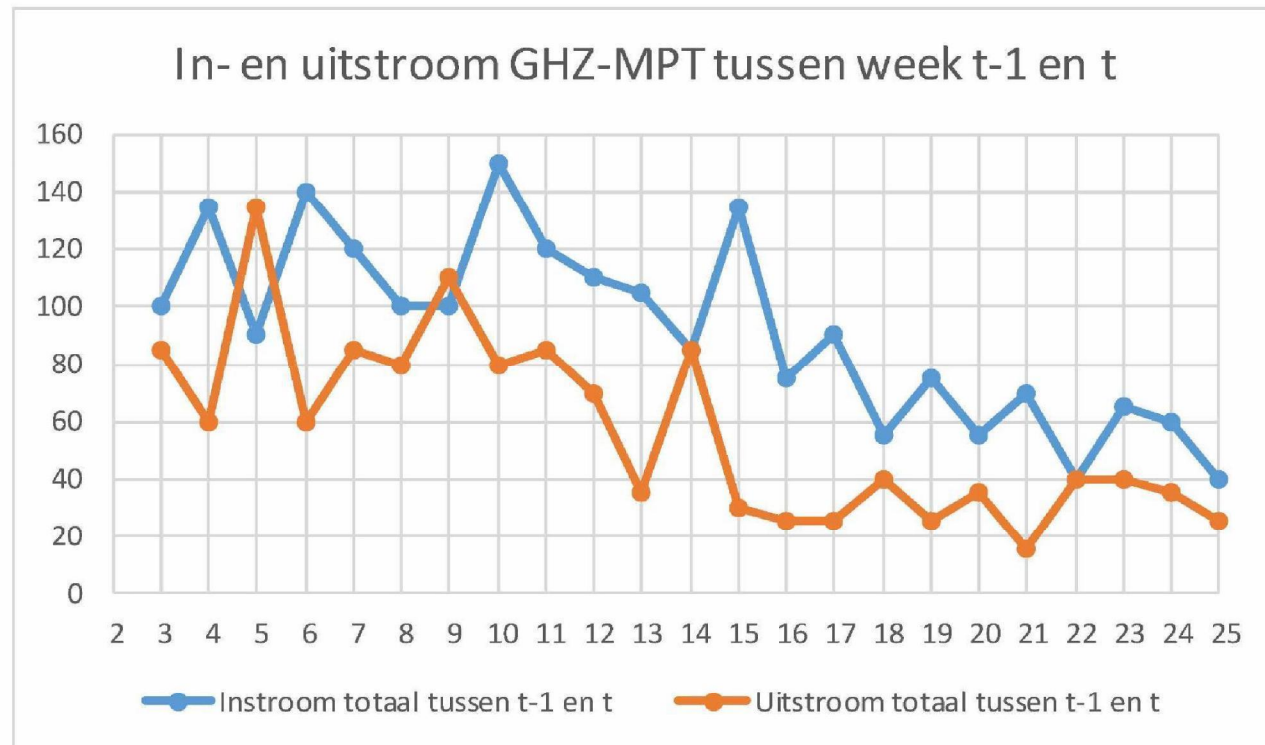




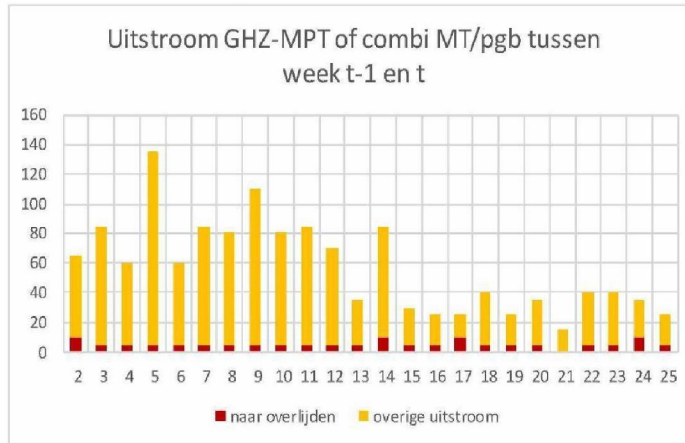
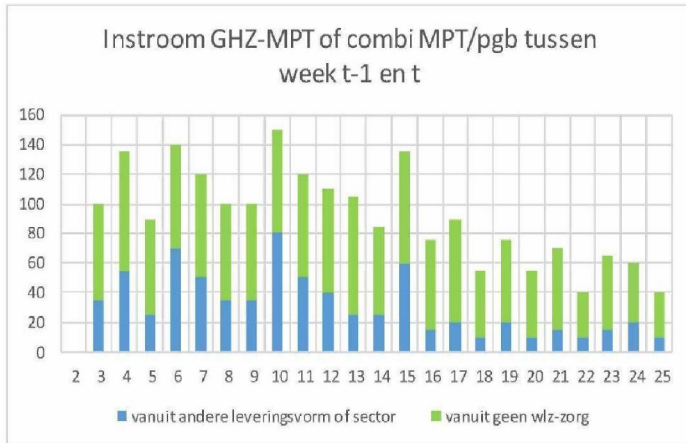
8. Gehandicaptenzorg MPT of combi MPT/pgb



GHZ-MPT in- en uitstroom

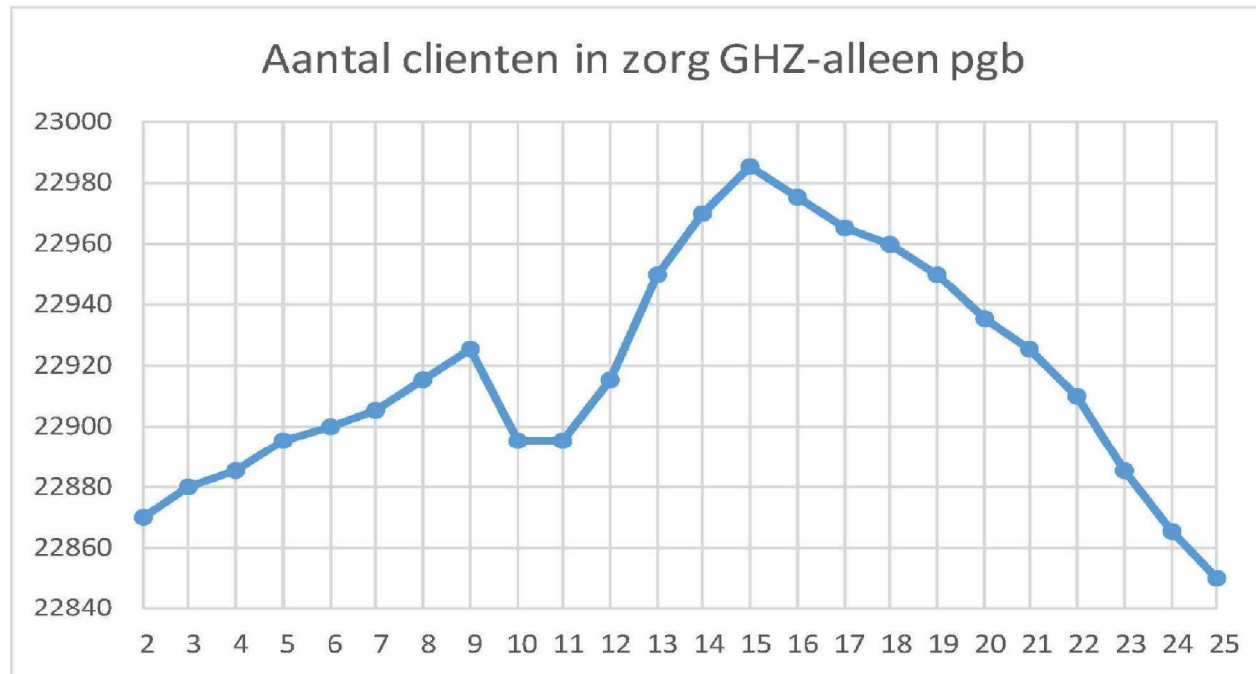


GHZ MPT in- en uitstroom

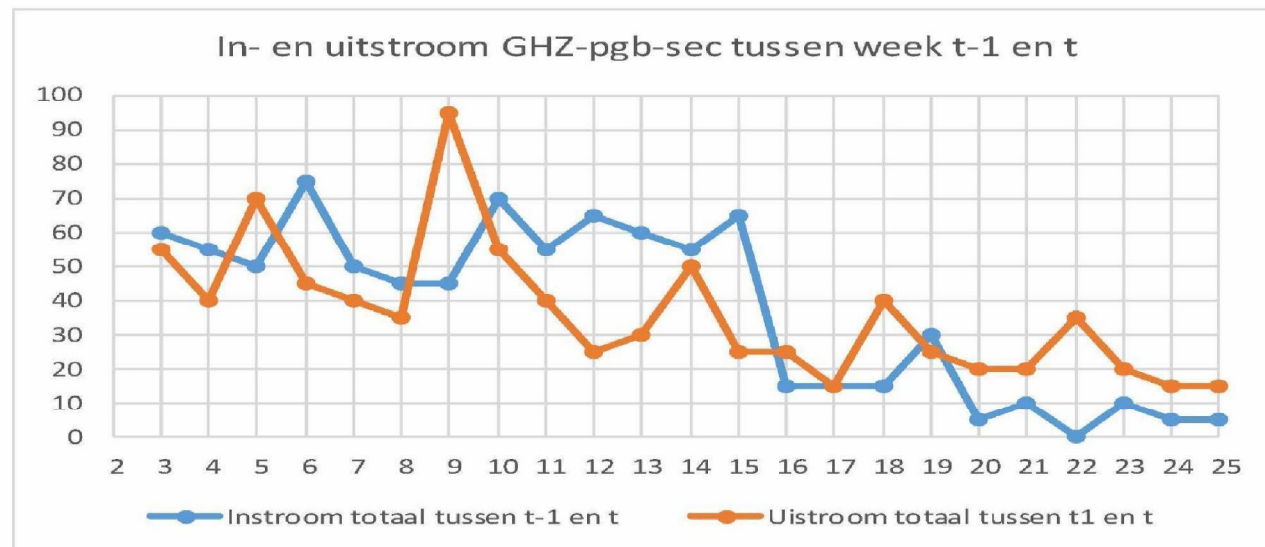




9. Gehandicaptenzorg – pgb sec



GHZ-pgb in- en uitstroom



GHZ pgb-sec in- en uitstroom

